

## **Civic Innovation Hub Supplemental Materials**

### **A. Stormwater 101**

1. EPA Definition of Green Infrastructure
2. Stormwater system when wet (Friends of the Chicago River)
3. Stormwater system when dry (Friends of the Chicago River)
4. "Green stormwater projects less likely in Black neighborhoods"

### **B. Community Organizing for Stormwater 101**

1. Organizers Handbook selection
2. Mutual Aid
3. Cook County Resilience Hubs (Harvey World Herald article)

### **C. Asset Mapping**

1. Assets Worksheet
2. Satellite Map of Community
3. Street Map of Community

Civic Innovation Hub  
Assets Worksheet  
June Meeting – 6/28/23

Participants, please review these questions. Use your answers to guide the creation of your community map by including their locations on the map.

There is some redundancy in the questions. No need for you to list the same places, people, or resources more than once. Think of yourself as coming at remembering community assets and issues from different angles to jog your memory.

When an asset lies outside the limits of your community, go ahead and list it anyway.

*General*

1. Where is your home?
2. What activities does your family do at home? [cook, garden, celebrations, home repairs, etc.]
3. What are the places that are important to you and your family in your community?
4. What are some of the places you go in your community? Why?
5. What are some places that you avoid? Why do you avoid them?

*Schools*

6. Where are the schools?
7. Where do kids and older students go after school? What do they do there?

*Businesses*

8. Where does your family go for outings? (restaurants, theaters, stores, clubs, VFW, etc.)

*Government Agencies*

9. Where is the closest library or the one you use?
10. What municipal or government agencies do you or your neighbors take advantage of? Where are they located?
11. Where does civic activity take place? (For example where do you go for voting, political debates, CAPs meetings, organizing for change, etc.)

### *Health*

12. What are some of the important medical or wellness facilities in your community?  
Do you use these?

### *Nature / Gardens*

13. Where are the parks, natural areas, gardens and green spaces?
14. What recreational activities do you enjoy? Where do you/did you do those activities?
15. What is happening in your community that is good for the environment?
16. What is happening in your community that is not so good for the environment?  
(For instance are there any major sources of pollution? Crime that keeps people from parks? Fly dumping? etc.)

### *Community Organizations*

17. What are the places where people get together in large groups? This could be for community meetings, celebrations, or other big events (e.g. banquet halls, community center, roller rink, senior center, etc.)

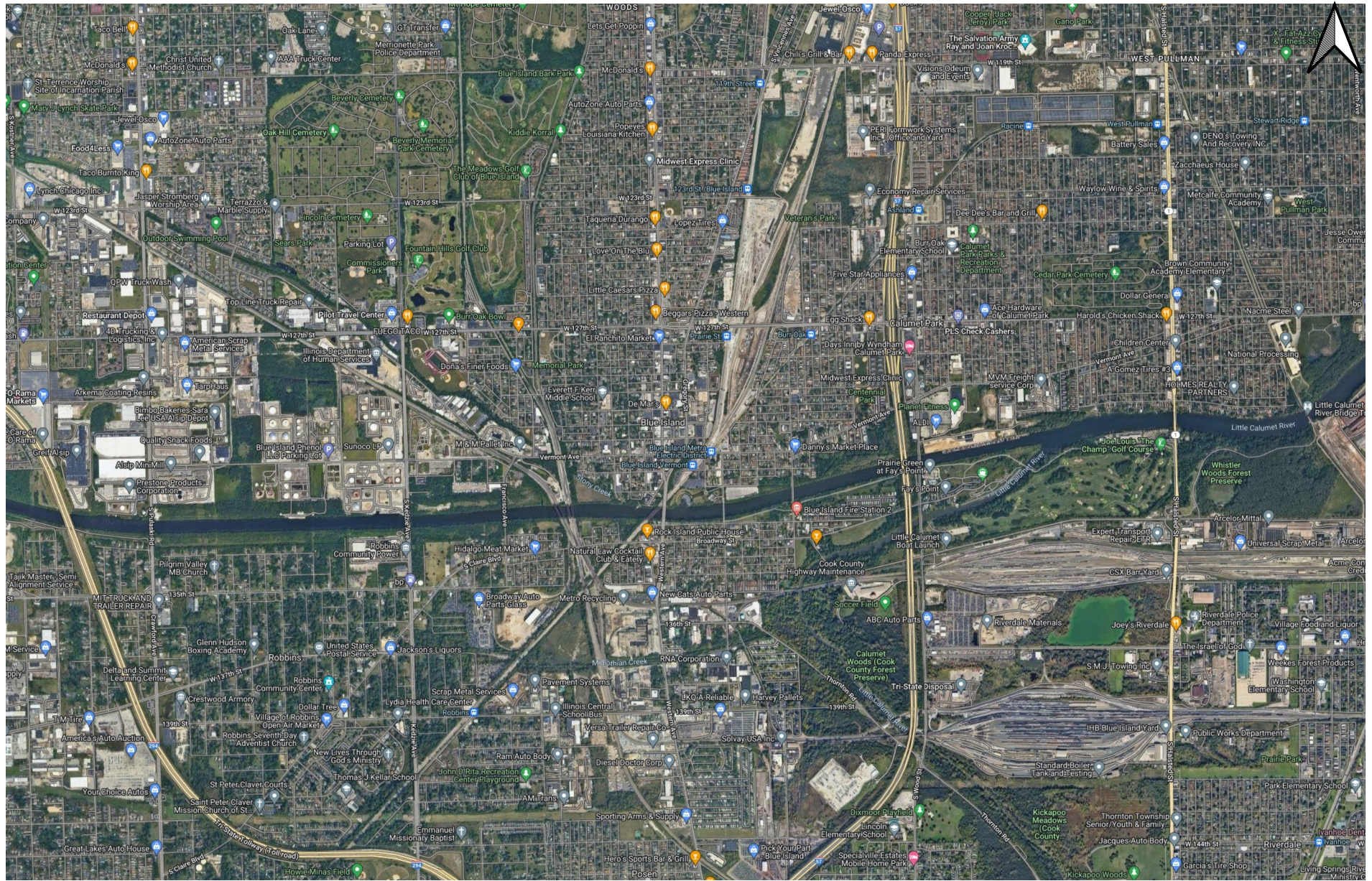
### *Religious Organizations*

18. Where is your place of worship?

### *Other*

19. Are there any other important buildings, intersections, or shops that should go on the map?
20. What other neighborhood social and environmental benefits or issues should we list for mapping and that have not come up already?

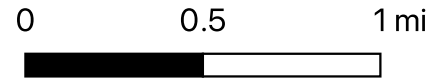
# Blue Island Satellite Map



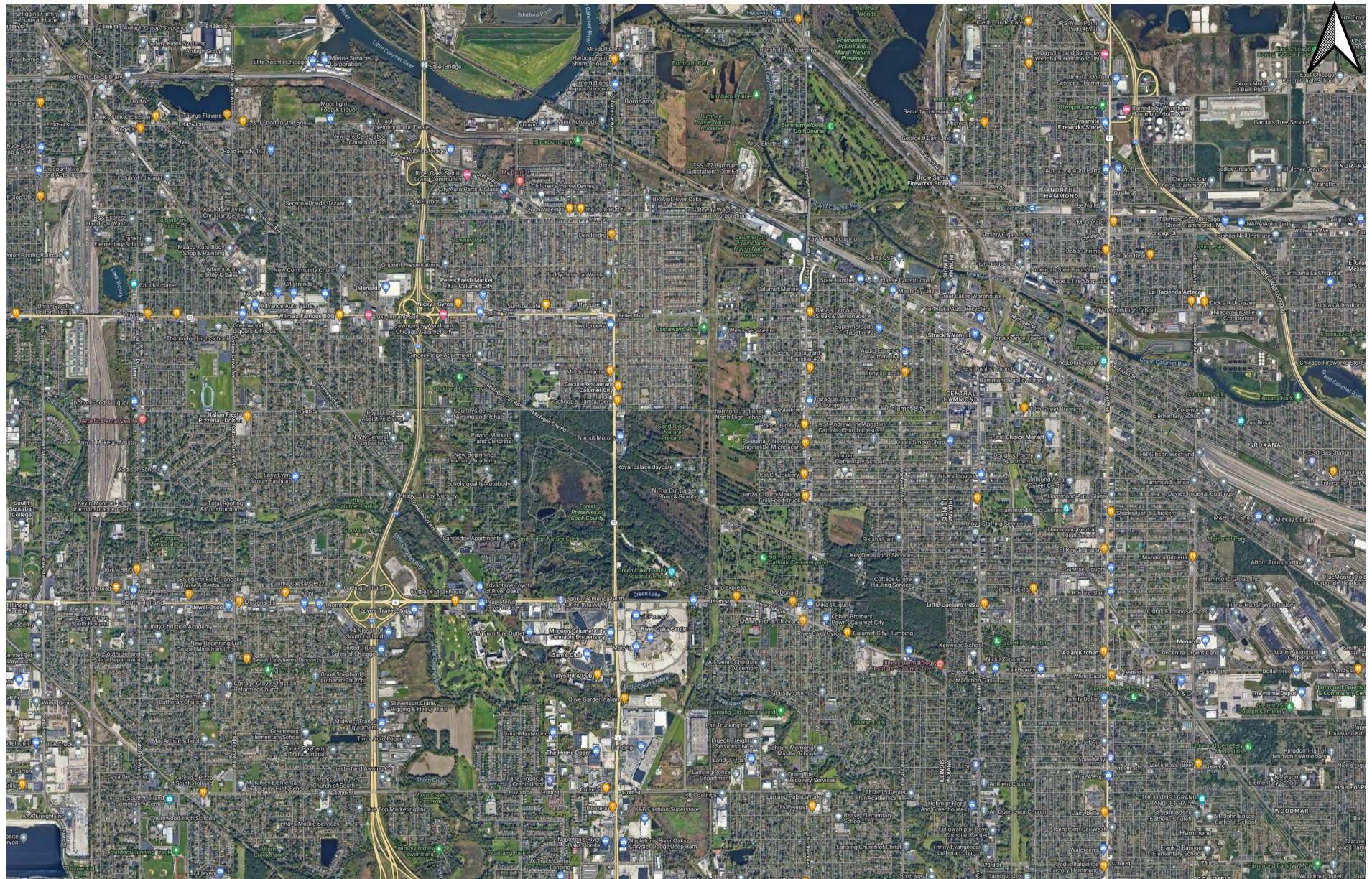
0 0.5 1 mi



# Blue Island Street Map



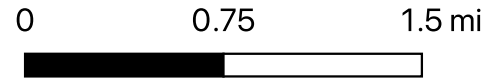
# Calumet City Satellite Map



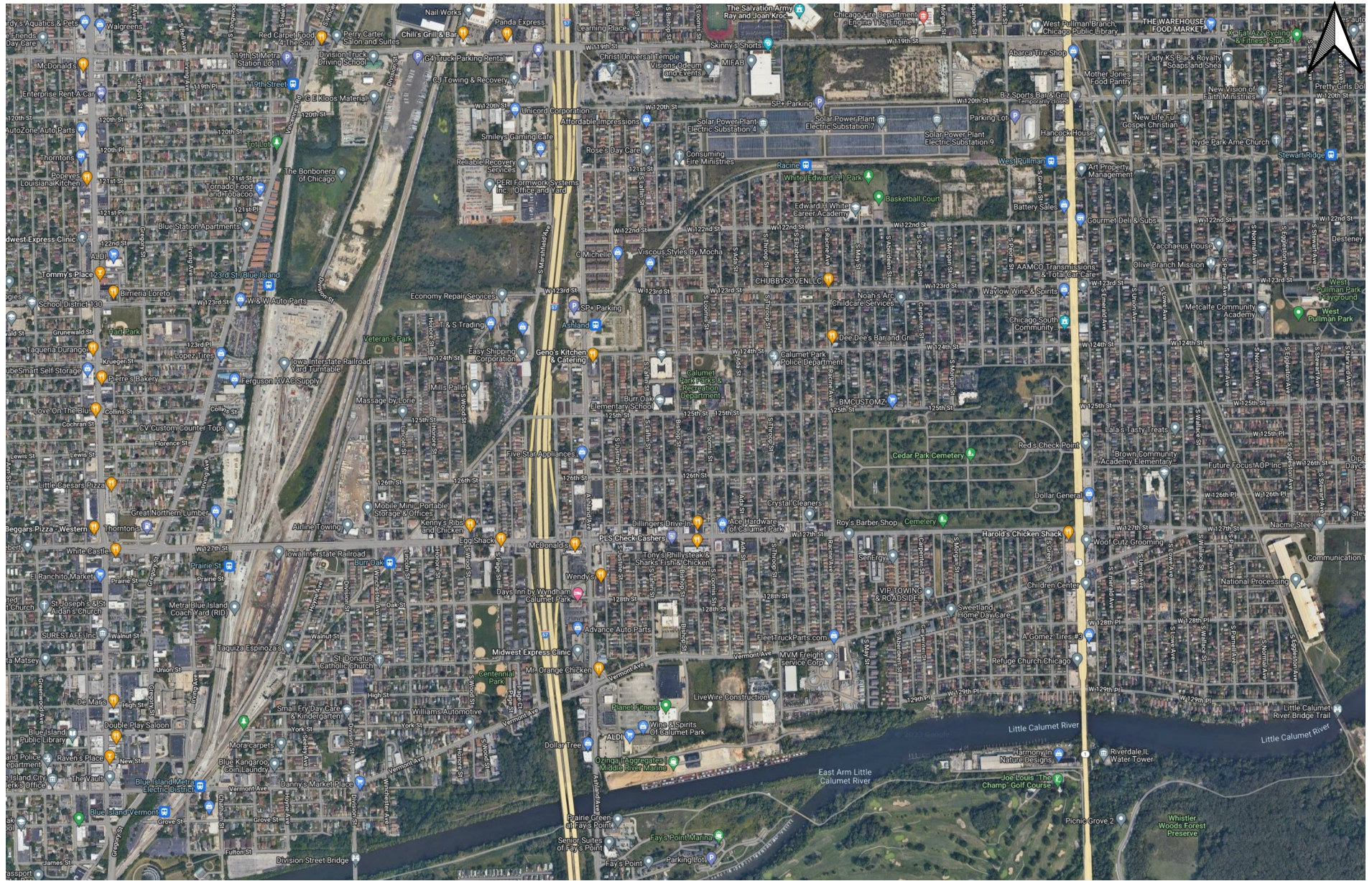
0 0.75 1.5 mi



# Calumet City Street Map



# Calumet Park Satellite Map



0 0.25 0.5 mi





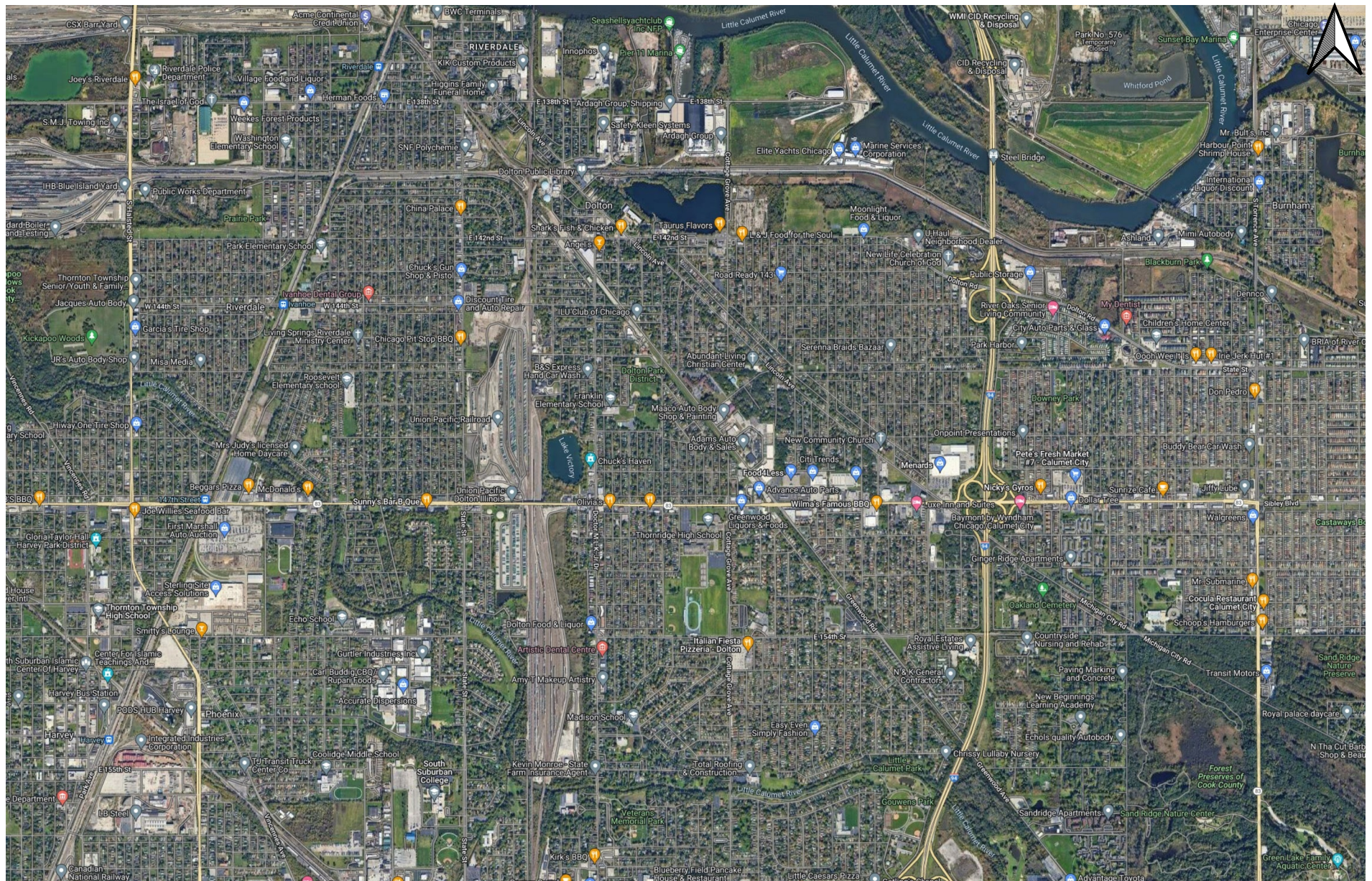
# Calumet Park Street Map



0 0.25 0.5 mi



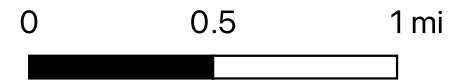
# Dolton Satellite Map



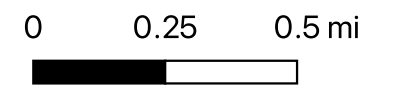
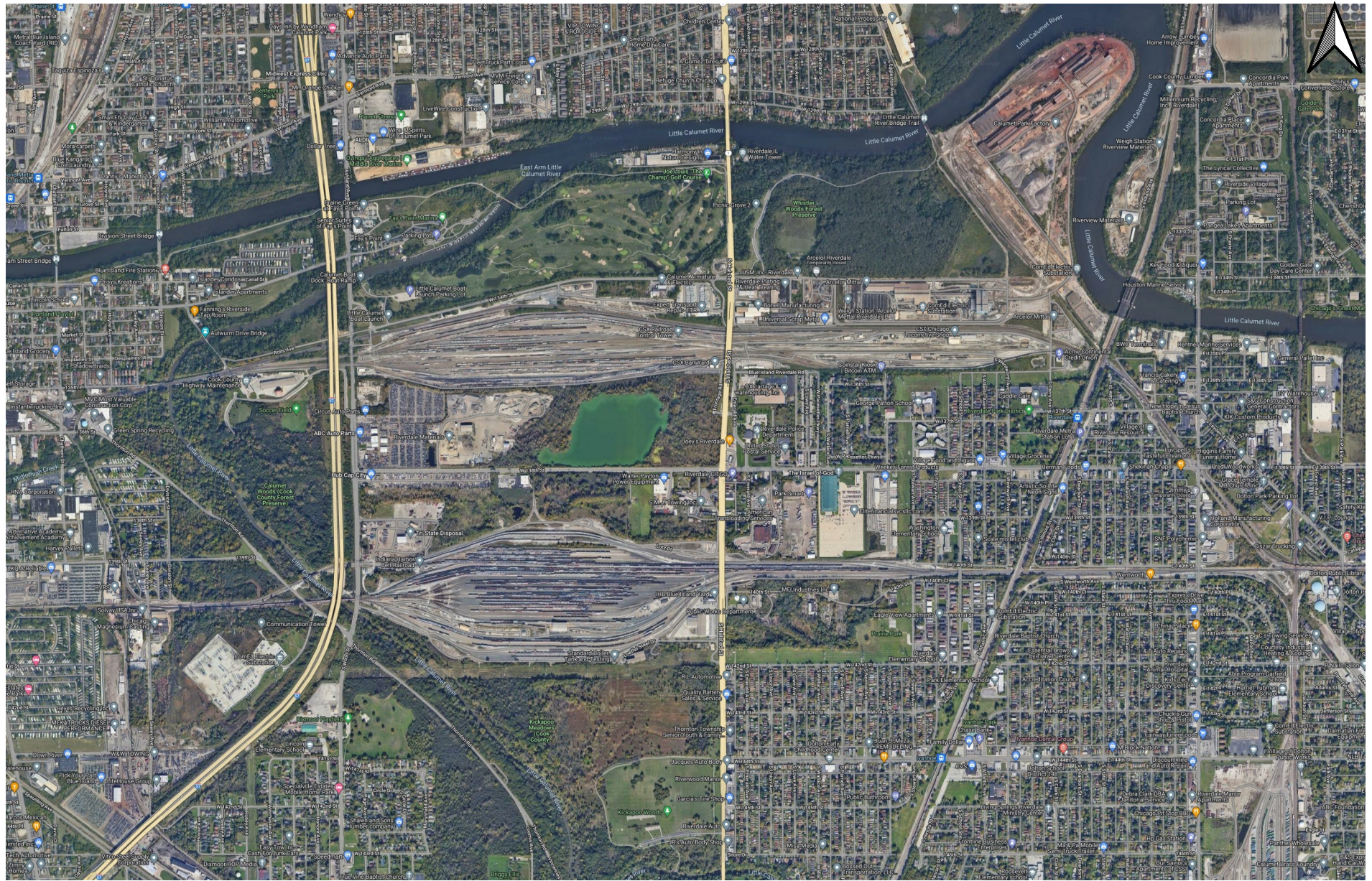
0 0.5 1 mi



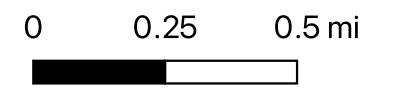
# Dolton Street Map



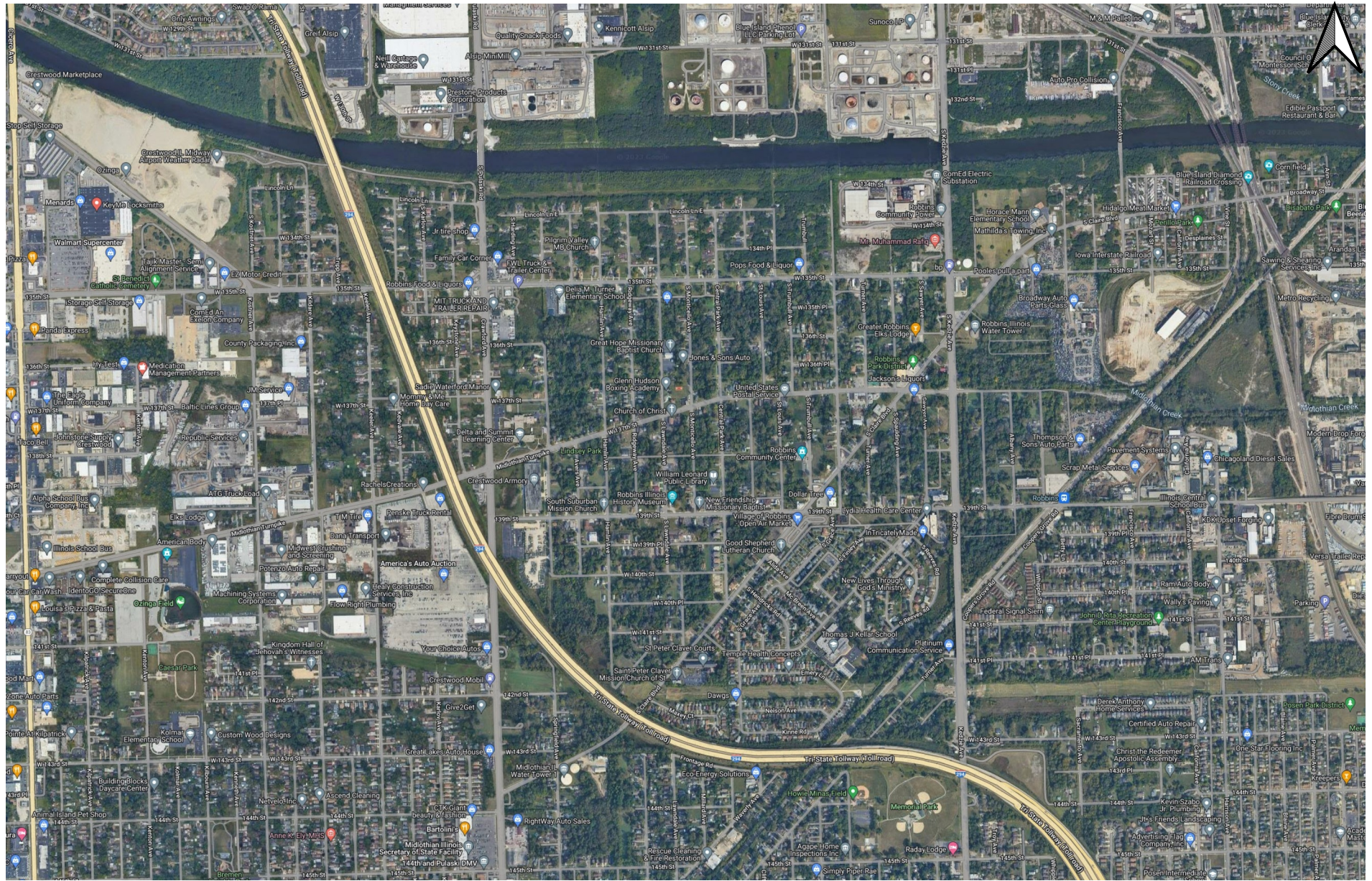
# Riverdale Satellite Map



# Riverdale Street Map



# Robbins Satellite Map



0 0.25 0.5 mi



# Robbins Street Map

